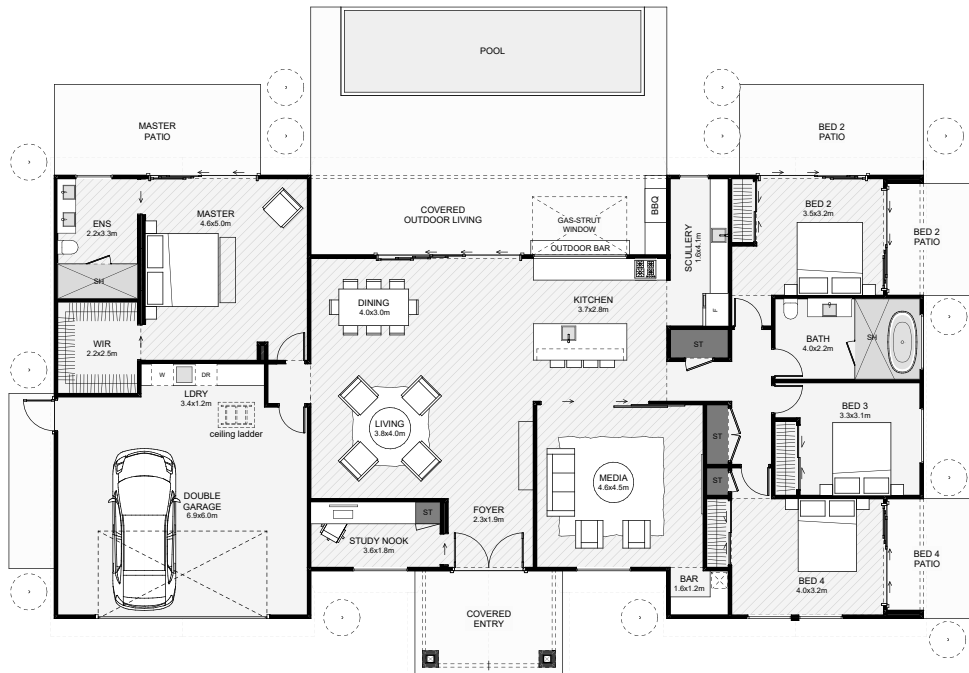




This perfectly symmetrical home lays the foundation for your ultimate lifestyle home. The master, in a private wing, has a large walk-in wardrobe and ensuite. The open-plan living positions the kitchen and dining at the centre of your indoor/ outdoor living, extending into a fully covered outdoor living space with an inbuilt kitchen and bar! Other features of this home include a hidden study close to the living, an in-built bar in the media room, a scullery that'll have you feeling organised and bedrooms with covered patios perfectly positioned for the morning sun. If you're looking for a family home that everyone can be excited about, this is it!



Floor Area: 250m<sup>2</sup>

 2  
  4  
  2  
  2  
  23.9m  
  13.5m

Contact us:

📞 021 025 82299

E: [andy@whitechurchconstruction.co.nz](mailto:andy@whitechurchconstruction.co.nz)

[www.whitechurchconstruction.co.nz](http://www.whitechurchconstruction.co.nz)



**WHITECHURCH**  
CONSTRUCTION LIMITED